



## User Guide For Antipodes Music Server/Players



# Index

Sections	Page
1. THE BASICS	1
2. OVERVIEW	2
3. SETUP STORAGE	5
4. ASSEMBLE YOUR LIBRARY	6
5. SETUP PLAYBACK (AUTO PRESETS)	9
6. SETUP PLAYBACK (USER PRESETS)	12
7. SERVER DASHBOARD	14
8. PLAYER DASHBOARD	15
9. THIRD-PARTY APPS	15
10. TROUBLESHOOTING	15

# 1. THE BASICS

## Connections

Insert your storage SSD disk(s) in the slots on the rear panel, and then place your Antipodes in your stereo rack, making sure that there is good ventilation for cooling.

You must **NOT** insert or remove disks while the Antipodes is powered up.

You must **NOT** copy or rip files to the Antipodes until you have inserted your disks and have setup your storage as shown in section 3 below.

Connect three cables to the rear of your Antipodes:

- Power
- Network
- Output to your DAC

It is recommended that you connect only one output cable at a time to your DAC, to optimise sound quality by eliminating unnecessary earth paths.

## Startup

To start an Antipodes, click the front panel power button – holding it in for half a second or so before releasing.

The Ready LED will begin to flash. When it has stopped flashing your Antipodes is ready to use.

## Shutdown

To power down an Antipodes, click the front panel power button – holding it in for half a second or so before releasing.

The Standby LED will begin to flash. When it has stopped flashing your Antipodes has shutdown.

**NEVER** remove power from the back of the Antipodes until shutdown is complete.

## LED Lights

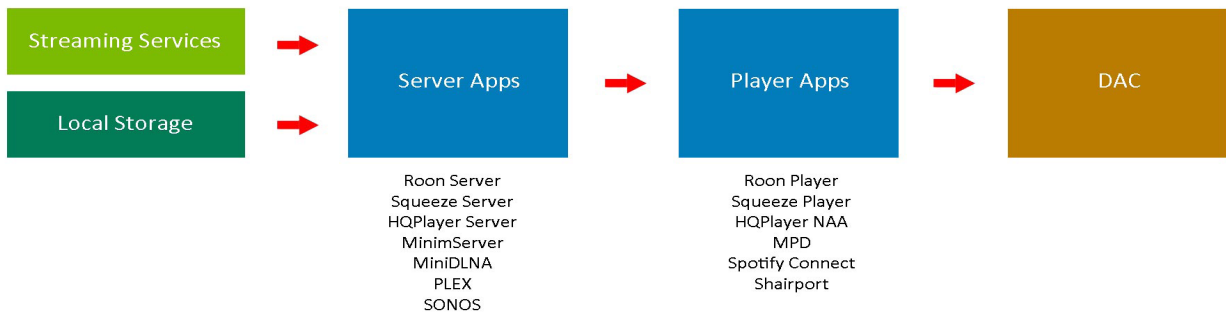
Some users will wish to turn off the front panel LED lights, particularly in a home theatre situation. Simply use a short click of the front panel Power Button to turn off the LED lights. The next time you do a long click (more than half a second), the LEDs will light again.

## 2. OVERVIEW

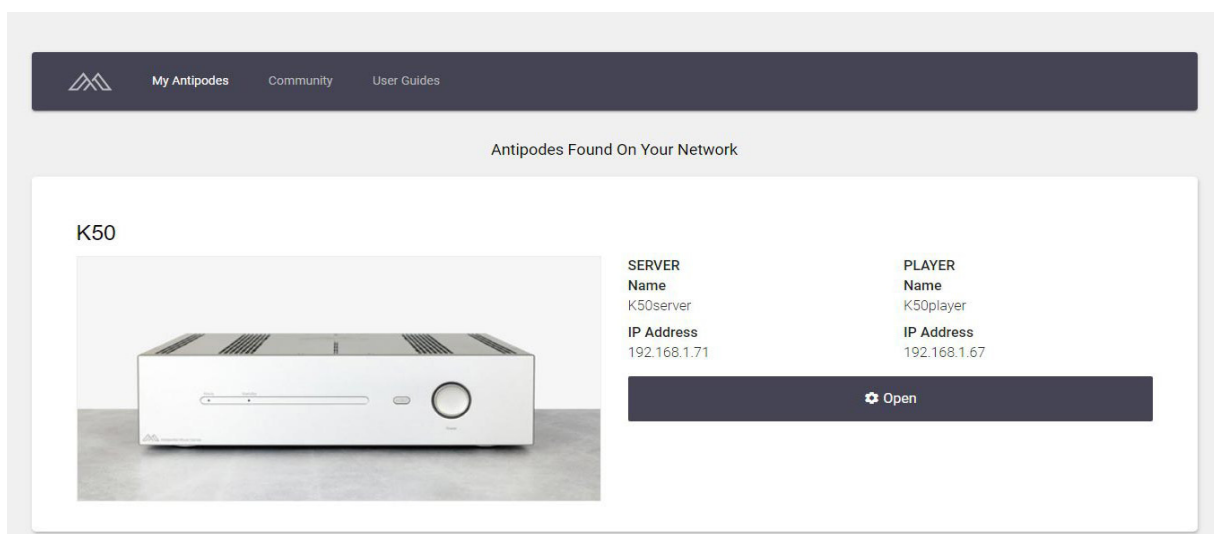
Setting up a computer audio solution is easier if you understand a few simple concepts.

Historically, computer audio evolved with separate Server and Player apps. This was so that a single Server device stored the files, and served the files to multiple Player devices distributed on the user's network. While some apps can perform both server and player functions, it is a good thing that in most cases the apps are separated, because it results in better sound. Sound is improved even further by using a high-power device to run the Server app and a low-power device to run the Player app.

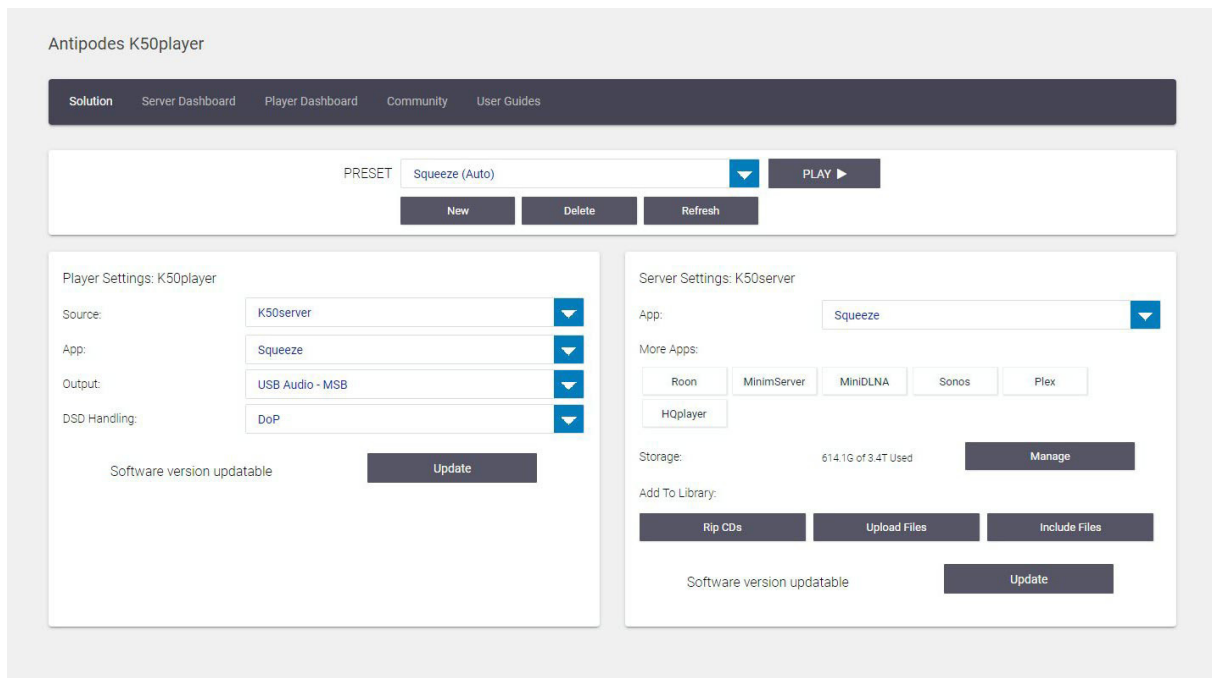
The image below illustrates the typical architecture of a computer audio solution, and lists the range of Server apps and Player apps available to be used on your Antipodes. (Note some people refer to what we call the Player as a renderer or as an end-point.)



Setting up an Antipodes is completed using the setup Dashboards on your Antipodes. After startup, open the Antipodes website, click on the My Antipodes menu item, and this opens the My Antipodes page, which lists any Antipodes found on your network. You can save the My Antipodes page as a shortcut to get there faster next time.



To setup an Antipodes, click on the 'Open' button to open the Solution Dashboard for that Antipodes.



At the Solution Dashboard, you can manage your storage disks, add files to your music library, and setup your playback solution by selecting an Auto Preset or by creating a User Preset. You can create as many User Presets as you wish, and you can delete User Presets you no longer need.

If your software version is not the latest available then Update buttons will appear on the Solution Dashboard. If you are up to date then the Update buttons will not be visible. Your current version number is shown on the Server Dashboard and Player Dashboard.

Important Notes:

**Using a Single Computer Antipodes.** If you are using a single computer Antipodes (eg. a S40, S30, K21, K22, CX, EX, DX, etc) on its own, click on the Open button, and in the Solution Dashboard the default Source is itself. It will show in both the Playback panel and the Server panel. Therefore you can complete setup of your playback solution at the Solution Dashboard.

**Using Two Antipodes Together.** If you are using two Antipodes for your playback solution (eg. CX as Server and EX as Player, or S40 as Server and S30 as Player, etc), then you only need to 'Open' the Antipodes performing the Player function (eg. the EX, or the S30, etc). The Solution Dashboard for the Player allows you to select any other Antipodes on your network as its Source Server. Then you can manage the Server's apps and storage setup from the Player's Solution Dashboard. This means a single playback solution involving two Antipodes models can be managed in the combined Solution Dashboard.

**Using a Dual Computer Antipodes.** With a dual computer, the Player device (eg. the K50player above) can only use the K50server as its source Server. But single computer Antipodes can be used as Players and play from the same K50server at the same time.

**Working With Third-Party Players.** If you are using a non-Antipodes as the player (eg. connecting to the Ethernet connection on your DAC), then you can open the Solution Dashboard for the Antipodes that you are using for the Server app, and configure it there.

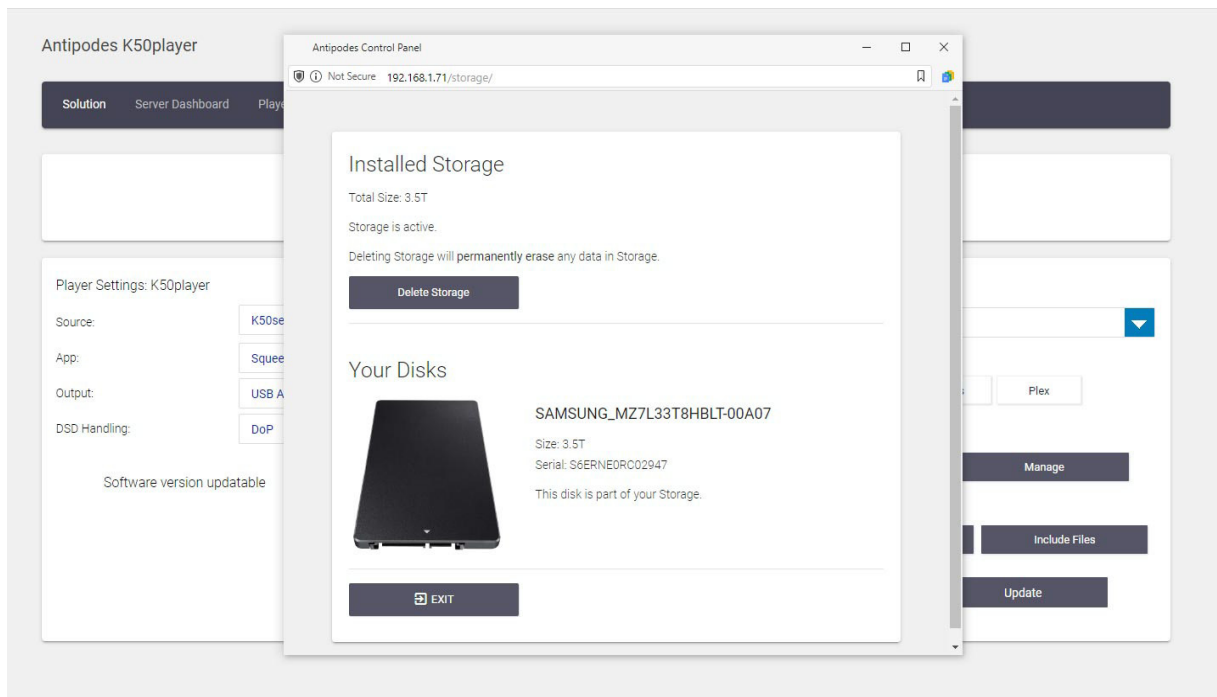
In practice, this is very simple and easy to do, and this capability makes it a breeze to manage complex configurations. Just remember to start with the solution Dashboard on the Player, and assemble your playback solution there. And when using a non-Antipodes player, simply open the Solution Dashboard for the Antipodes Server.

### 3. SETUP STORAGE

Your Antipodes is programmed to create a single common **logical** library location, that can span any number of **physical** disks that you insert. Therefore there is a setup process required to add a **physical** disk to the **logical** storage space.

Simply sliding disks into the rear slots of your Antipodes will **NOT** enable them to be used until they have been added to storage.

You can manage storage at the Solution Dashboard or by opening Storage Manager at the Server Dashboard, and then follow the prompts. During this process, your Antipodes will reboot to allow the changes to take place. Please be patient as large disks can take several minutes to properly prepare. A low-level format takes time but ensures that any bad sectors are disabled before you copy music onto the disks.



## 4. ASSEMBLE YOUR LIBRARY

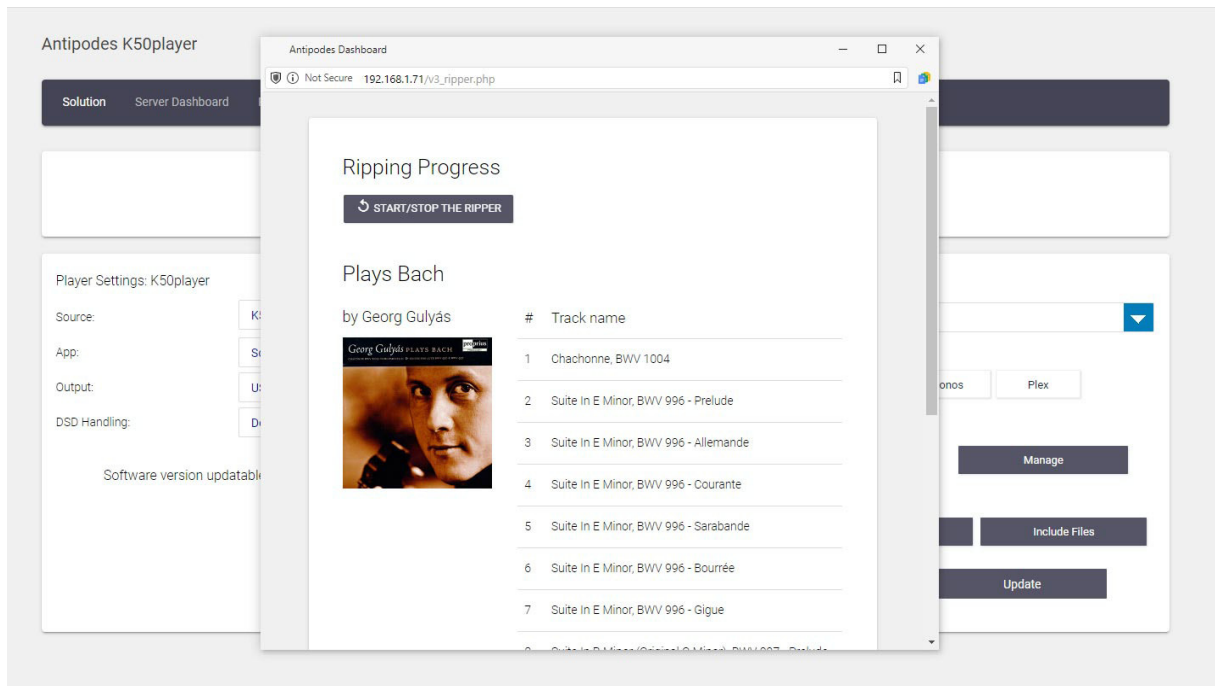
Your Antipodes management interface has three tools for assembling your library.

You can attach any USB CD Ripper to auto-rip your CDs to your Antipodes.

You can also copy music files from any network location to your Antipodes.

You can also include, in your library, any music files that are on your network (such as files on a NAS) without needing to copy them to the Antipodes.

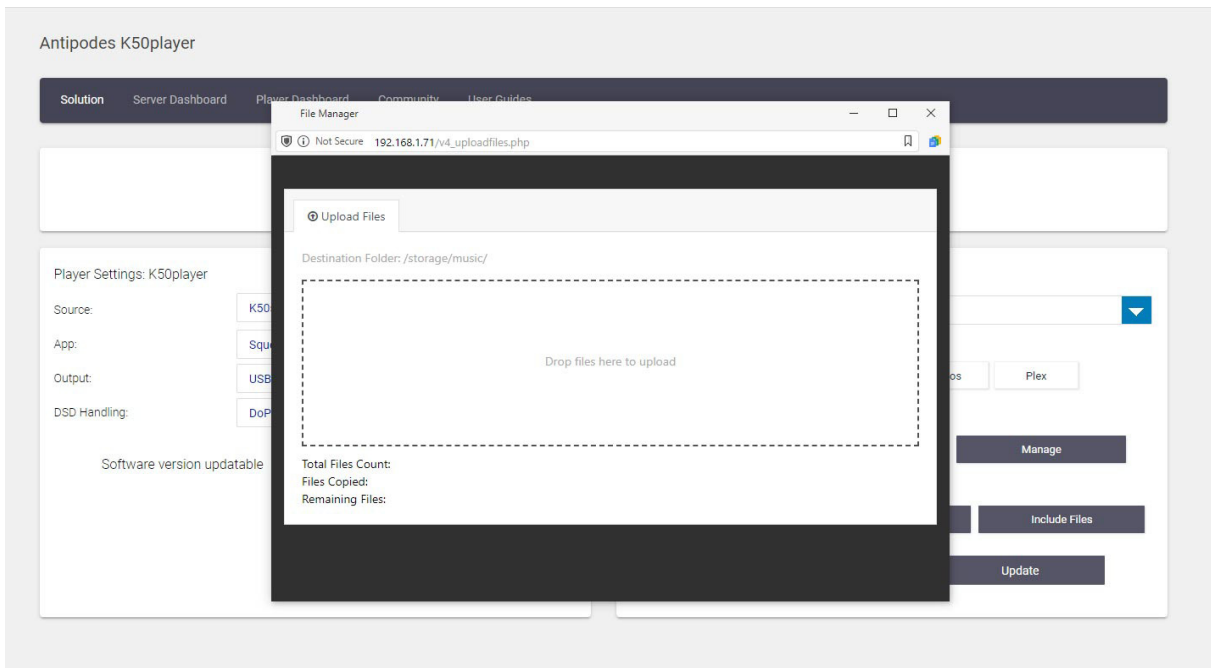
The auto-ripper software will get you a very high quality rip using any functioning USB CD Ripper. Great things take time, and rips will take two or three times longer than normal, because the software is programmed to get the best possible rip from your CDs. Click on Rip CDs in the Solution Dashboard to check ripping progress or if you wish to abort the rip.



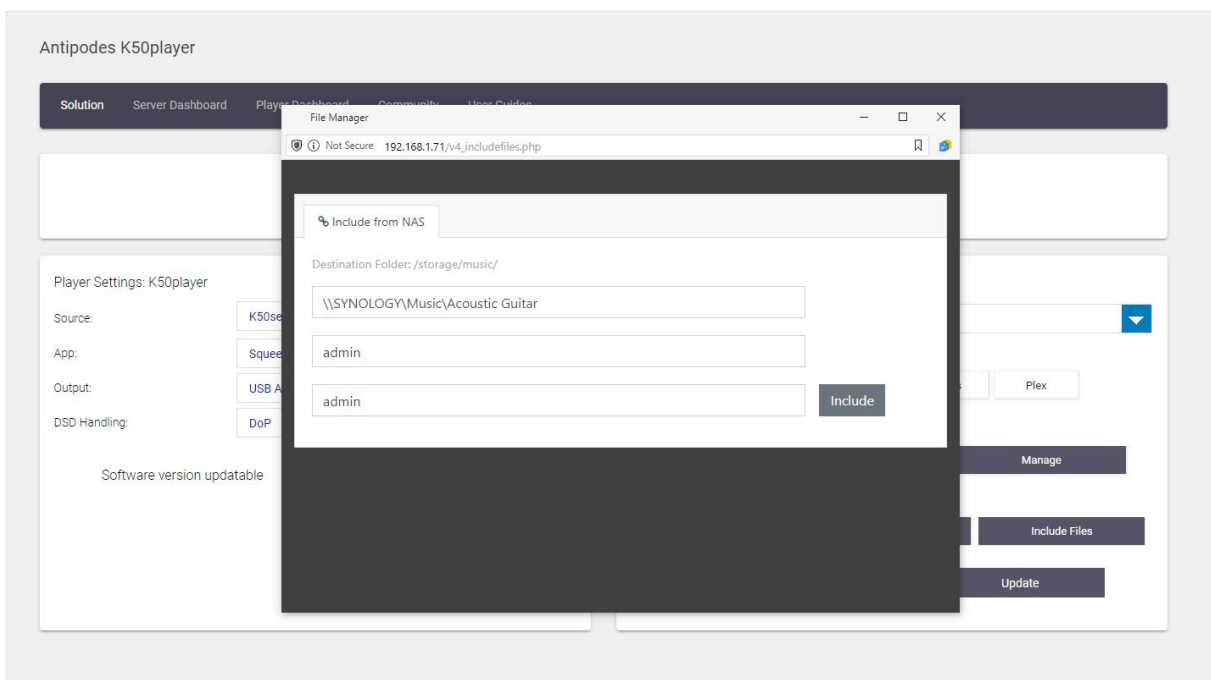
Click on Upload Files at the Solution Dashboard and then open Windows File Explorer or Mac Finder on your PC. You can then 'drag and drop' your music files/directories into the box shown below.

Note that the security features in some browsers may not support this feature fully, and if you strike this problem, we cover an alternative upload method later in this section.





You can include music files that you have on your NAS in your Antipodes library, without having to copy them to the Antipodes. Click on Include Files in the Solution Dashboard, enter the network address of the folder to include, and the login credentials for your NAS – see below.



But you do not have to use the first two of these tools. You can rip CDs on another computer and/or copy your music files to the Antipodes using Windows File Explorer or Mac Finder. You will find your Antipodes under the Network tab in File Explorer or Finder, and this will allow you to copy your files to or from the '/storage/music' folder using your computer.

The library location '/storage/music' has already been pre-set as the library location within every Server app on your Antipodes.

***Important Notes.***

***Copying Files To The Antipodes.*** You must ***NOT*** copy files to your Antipodes before you have setup some storage capacity.

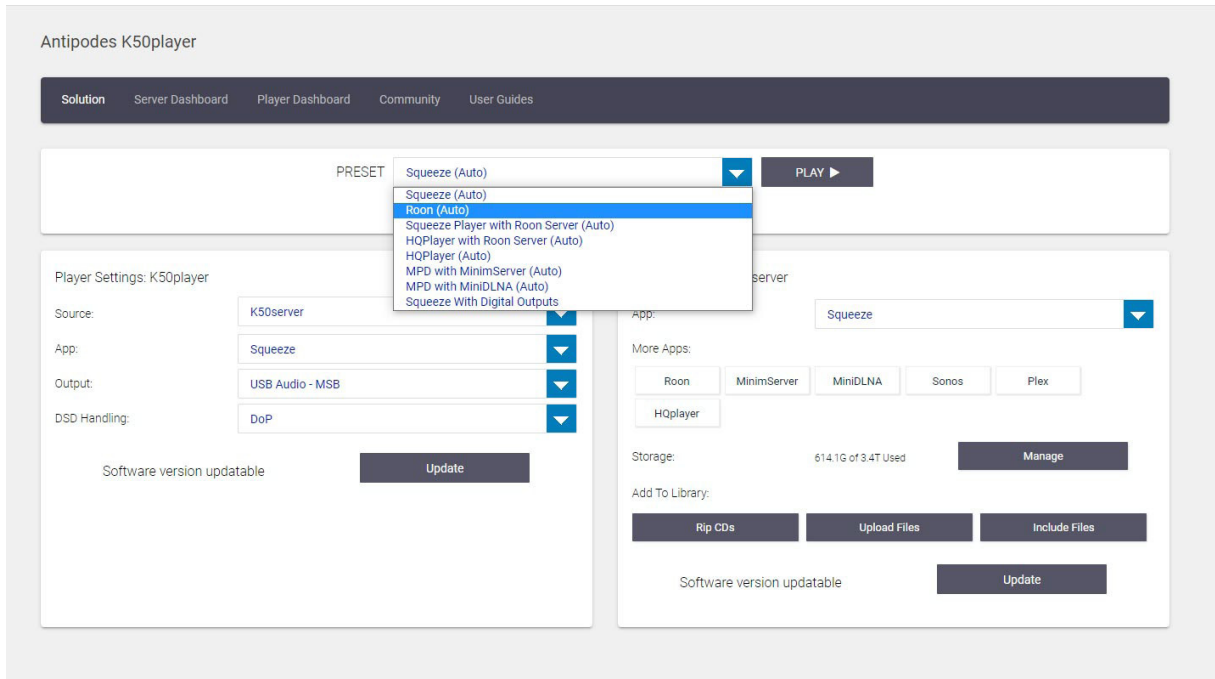
***Roon Watched Folders.*** You must ***NOT*** set any watched folders within Roon. Simply place your files in the '/storage/music' folder on your Antipodes, and/or include (mount) any network folders in the '/storage/music' folder, and Roon will automatically include them in its library.

***Roon Background Audio Analysis Speed.*** Using a number of cores at 100% to do this is only suitable for computers that are low-power or fan-cooled. Because your Antipodes is passively cooled for optimal audio quality, you should leave this Roon feature at its default or perhaps just run one core at 100%, and monitor temperatures.

## 5. SETUP PLAYBACK (AUTO PRESETS)

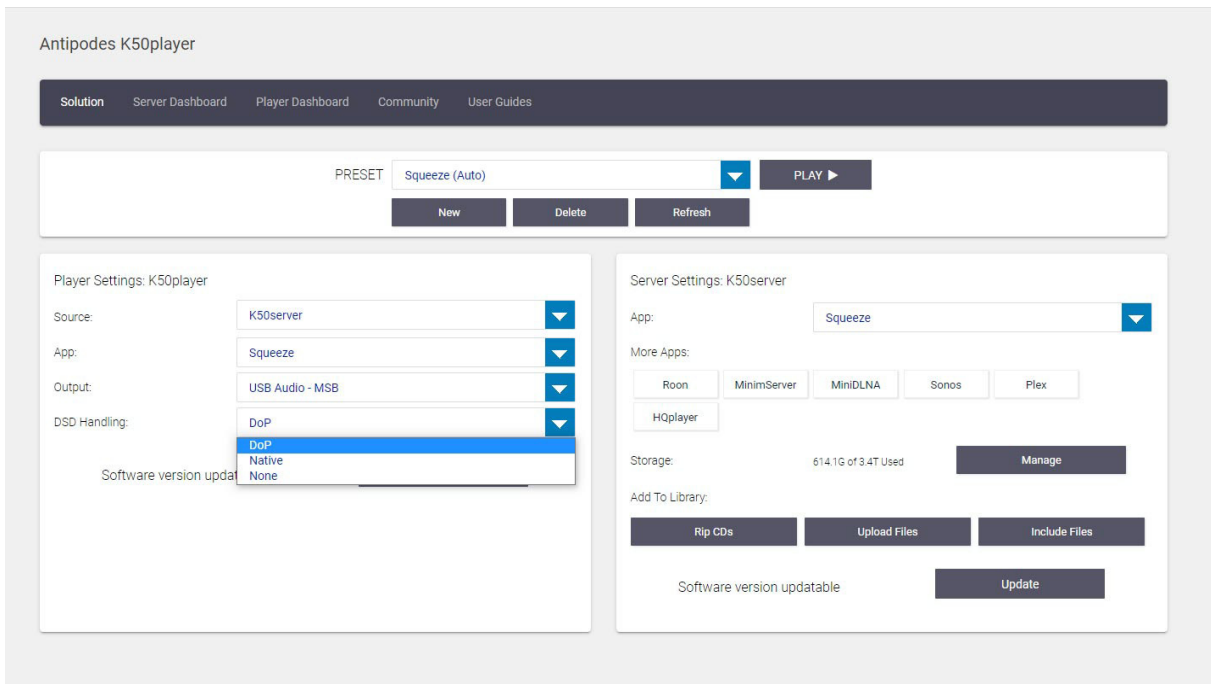
Your Antipodes has intelligent Auto Presets covering the playback methods that can be used with your Antipodes. For example, if you wish to use Roon, you just need to select the Roon (Auto) Preset, and start using Roon on your remote control device to play music.

The Auto Preset chosen will enable the necessary Player app on the Player, and the necessary Server app(s) on the Server.

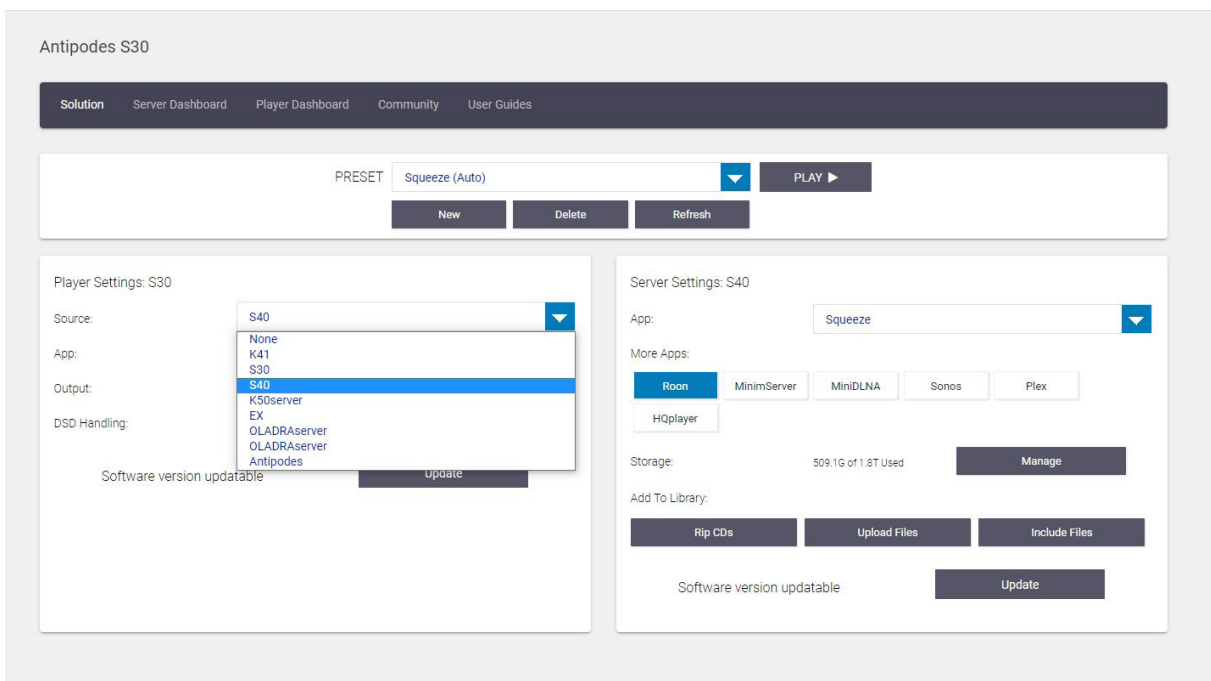


Auto Presets also select the Output you are most likely to want to use. If a USB DAC is connected, then it will be set as the Output. If there is no USB DAC connected then the Output will be set to any other viable option (eg. the Digital Audio outputs on an Oladra or K50, or the Analog Audio output on an S30).

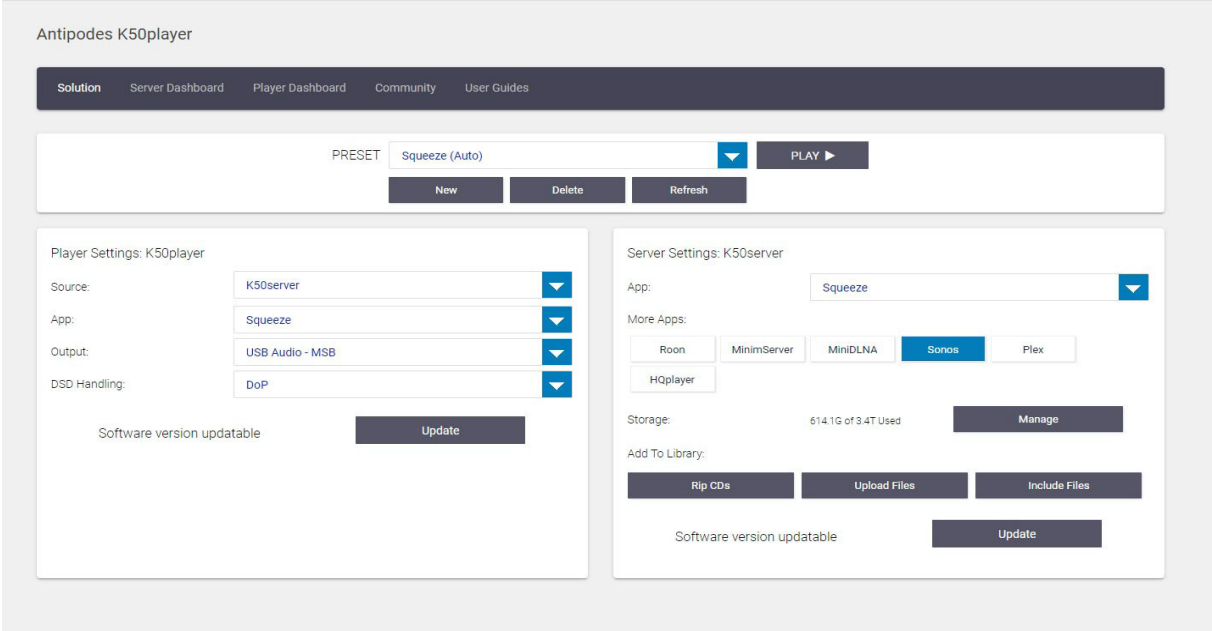
When first shipped, the DSD Handling setting is to use DoP. You can change this and your new setting will apply to all Auto Presets till you change it again.



You can even change the Source Server and the Preset will manage the changes without you having to re-configure anything.



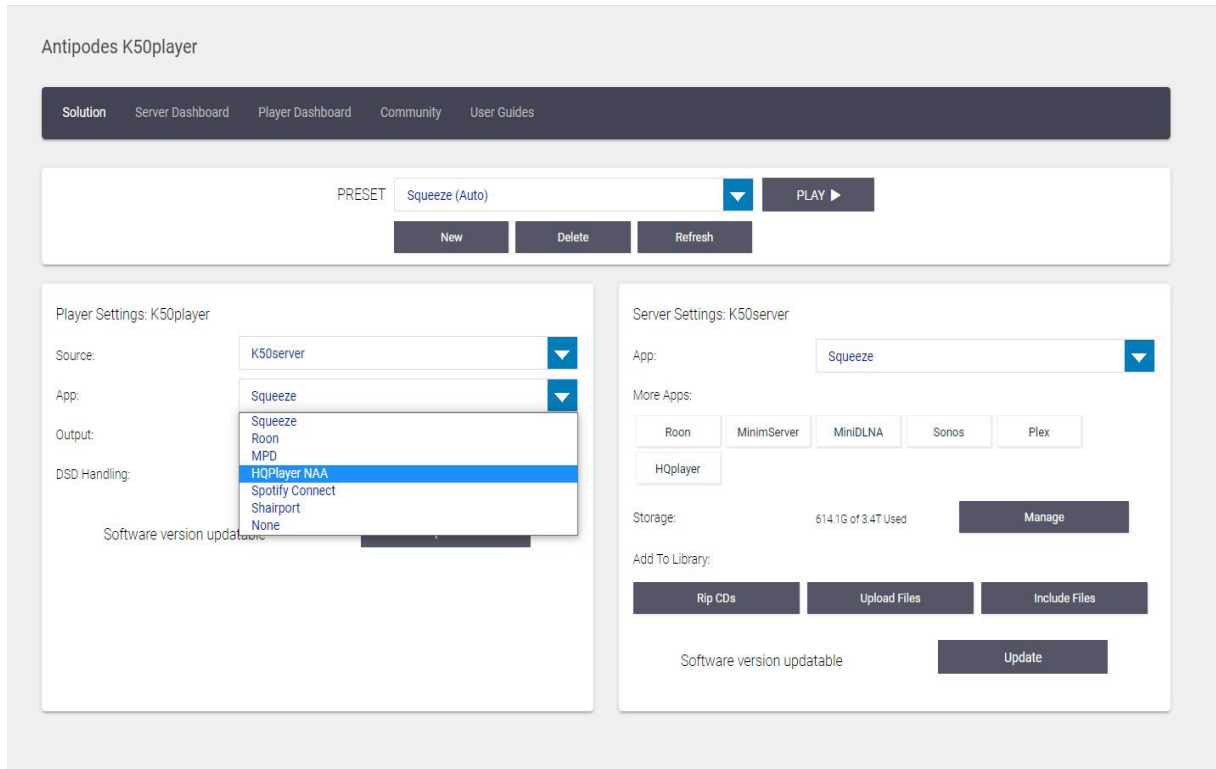
And you can enable more Server apps for network distributed music to Antipodes and third-party Players.



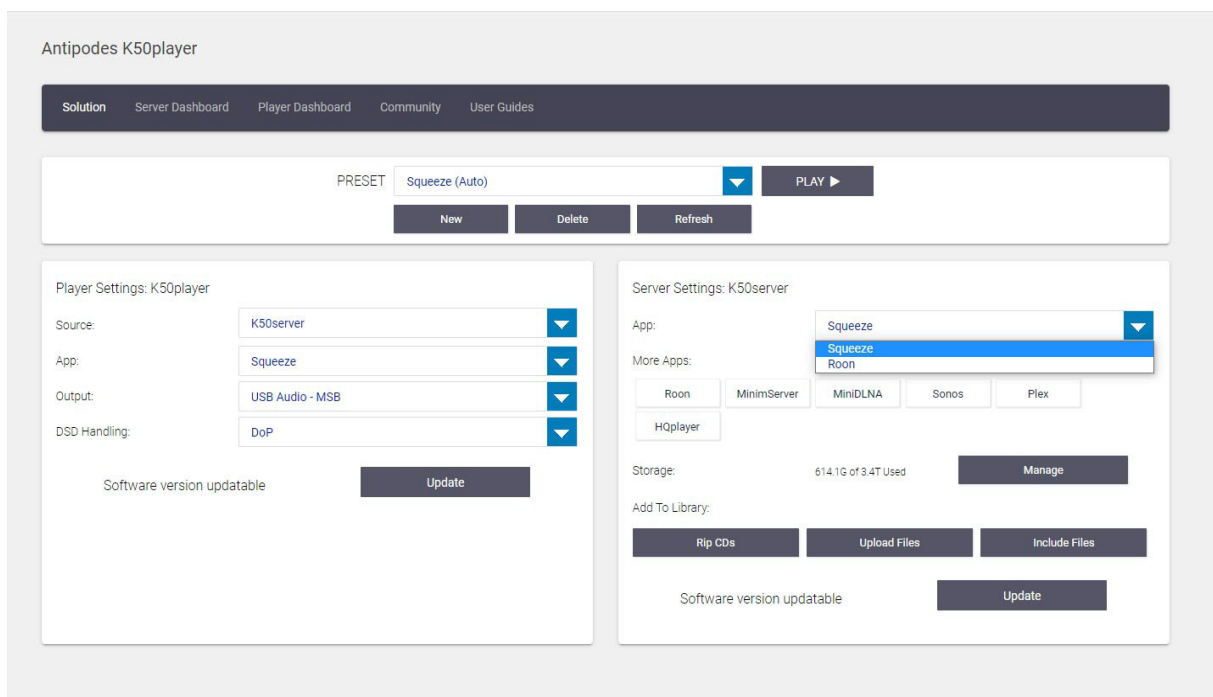
## 6. SETUP PLAYBACK (USER PRESETS)

You can also make and save your own User Presets. Click on the 'New' button, or attempt to change an Auto Preset, and you will be asked to provide a new User Preset with a name/description. Then you will be free to use the Solution Dashboard to configure your User Preset.

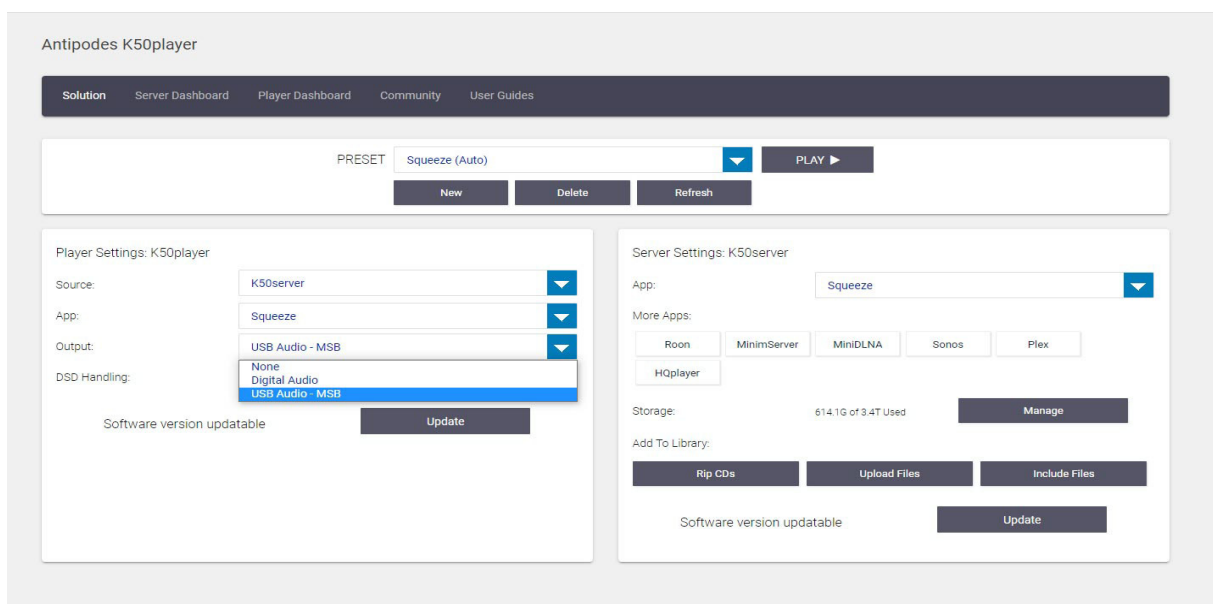
For example, you can select any of the available Player apps.



The selected Server app will default to a Server app that will work with the Player app you chose. The Server app dropdown list will show only the Server apps that will work with that Player app.



You will be able to make any other changes you like, such as the Output, and the changes are automatically made to the current User Preset.



You can make as many User Presets as you like. Select the User Preset and then click on the 'Delete' button to remove any that you no longer need.

# 7. SERVER DASHBOARD

The Server Dashboard is mainly for advanced users, and the only thing you really need to do there is to set your correct time zone, and to register your device with us.

If a Server app is behaving unusually, you can come here to restart it, and in some cases either reinstall it or clear its database.

You can also check resource usage if your Antipodes is behaving unusually.

The screenshot displays the 'Antipodes K50server' dashboard. At the top, there is a navigation bar with 'Solution', 'Server Dashboard', 'Player Dashboard', 'Community', and 'User Guides'. The main content is organized into several panels:

- System Information:** Shows device details like Model (K50server), Serial Number (K5050000s), Room Type (Antipodes D2), Device Name (K50server), Time Zone (Pacific/Auckland), Registration (Not Yet Registered), Software Version (AMSV4.0), IP Address (192.168.1.71), and MAC Address (00:E0:4C:68:05:C5).
- System Health:** Features three circular gauges: CPU Usage at 0%, Memory Usage at 5% (0.39GB of 7.67GB used), and Core Temperatures at 38°C.
- Library Storage:** Shows Storage Usage at 18% (614 GB of 3.4T used) with a 'Refresh' button. It also includes icons for 'Manage Disks', 'CD Import', and 'File Manager'.
- Service Status:** A grid of service cards for SQUEEZE (Enabled), ROON (Disabled), MINIMSERVER (Disabled), MINDLNA (Disabled), HQPLAYER Server (Disabled), and PLEX (Disabled). Each card has a 'Manage' section with buttons for Restart, Reinstall, Clear Database, and Open, and an 'Information' section with descriptive text.



## 8. PLAYER DASHBOARD

The Player Dashboard is mainly for advanced users, and the only thing you really need to do there is to set your correct time zone, and to register your device with us. If the Player app is behaving unusually, you can come here to restart it, and some Player apps have other configuration parameters. You can also check resource usage if your Antipodes is behaving unusually.

Antipodes K50player

Solution Server Dashboard **Player Dashboard** Community User Guides

**System Information**

Model: K50player  
Serial Number: K50S0000p  
Room Type: Antipodes D2

Device Name: K50player **Change**

Time Zone: Pacific/Auckland (most locations) **Change**

Registration: Not Yet Registered **Change**

Software Version: AMSv4.0 **Update**

IP Address: 192.168.1.67      MAC Address: 00:30:18:0A:7C:6D

**System Health**

CPU Usage  
0%

Memory Usage  
5%  
0.38GB of 7.58GB used

Core Temperatures  
36°C

**Active Player App**

Squeeze	Restart	
Room	Restart	More..
MPD	Restart	More..
HQPlayer NAA	Restart	
Spotify Connect	Restart	Login
Shairport	Restart	

## 9. THIRD-PARTY APPS

We do not attempt to cover the use of third-party apps in this guide. Third-party app providers may change their apps at any time, without giving us notice, so to use apps like Room, HQPlayer, Minimserver etc, you are better to visit the developer's website for the latest information, if needed. If you are still unsure about something, the fastest way to get a response is usually via the Antipodes User Forum, or you can book an appointment with Antipodes Support.

## 10. TROUBLESHOOTING

If you cannot setup your Antipodes in the way shown in the videos above, or if you think there may be a fault with your Antipodes, visit our troubleshooting website page first, because the source of the problem is often something you can rectify quickly yourself.



Antipodes Audio Limited - Clean Technology Tower - 2 Ake Ake Place  
Otaki Commercial Park - Otaki 5512 - Kapiti Coast - New Zealand  
[contact@antipodes.audio](mailto:contact@antipodes.audio)